

## 2 Bedroom

### TYPE 2a

Area: 61 sq m / 657 sq ft

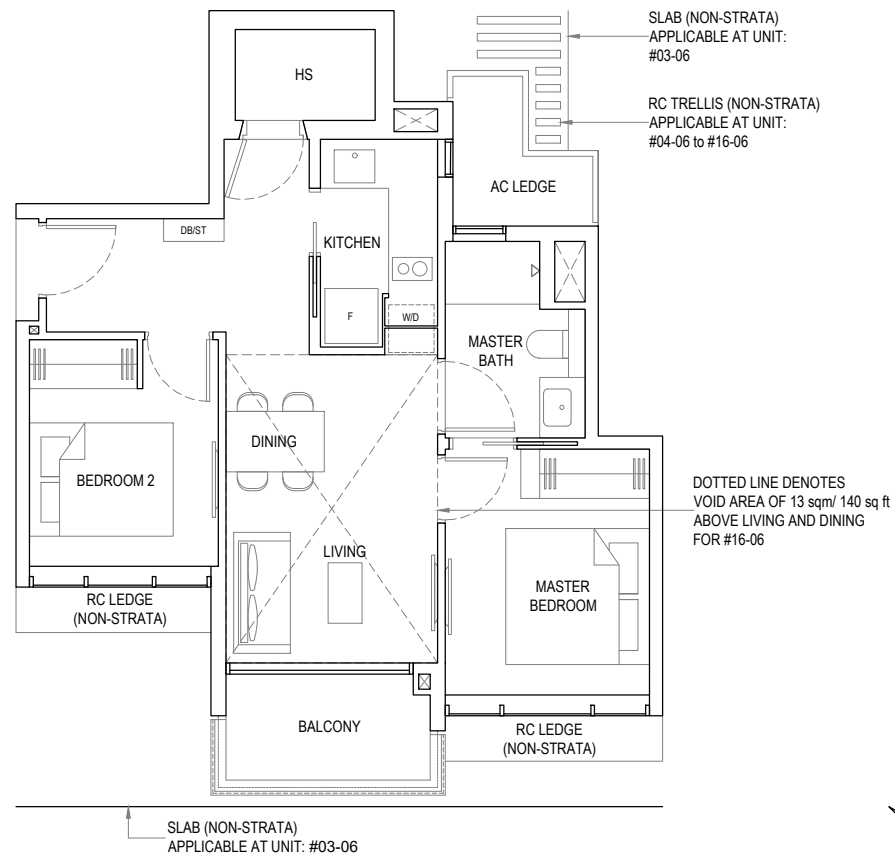
Unit(s): #03-06 to #15-06

### TYPE 2a-P

Area: 74 sq m / 797 sq ft

Including strata void area of  
13 sq m / 140 sq ft  
above living and dining

Unit(s): #16-06

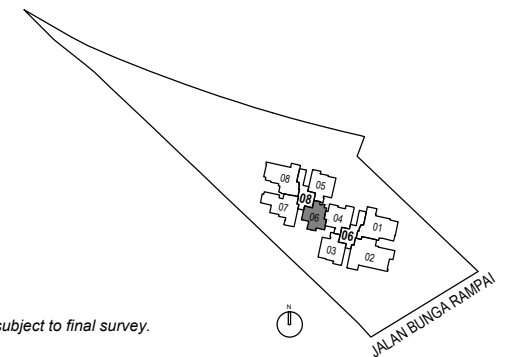


#### LEGEND

DB/ST	DISTRIBUTION BOARD/STORAGE
F	FRIDGE
HS	HOUSEHOLD SHELTER
W/D	WASHER CUM DRYER



Areas include AC ledge, balcony, PES and strata void where applicable. The plans are subjected to change as may be required by relevant authorities. All areas and measurements stated herein as approximate and subject to final survey.



## 2 Bedroom Premium 1

### TYPE 2b

Area: 68 sq m / 732 sq ft

Unit(s): #02-03 to #15-03

#03-05 to #15-05

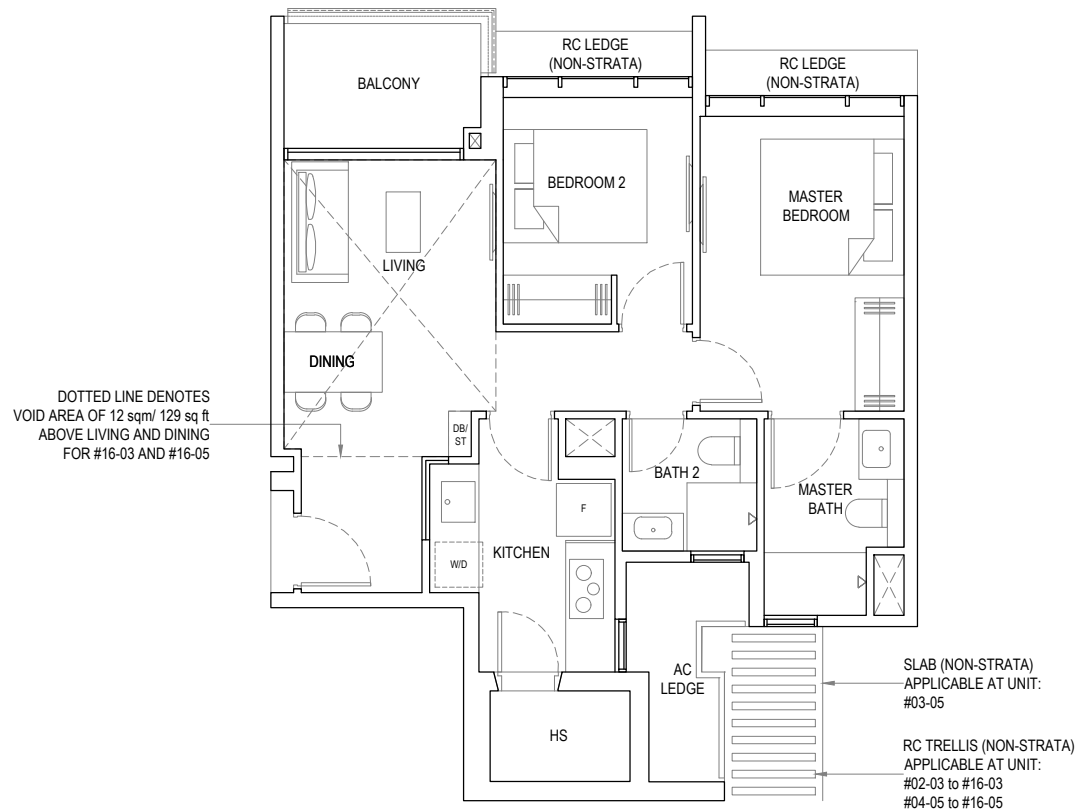
### TYPE 2b-P

Area: 80 sq m / 861 sq ft

Including strata void area of  
12 sq m / 129 sq ft  
above living and dining

Unit(s): #16-03

#16-05

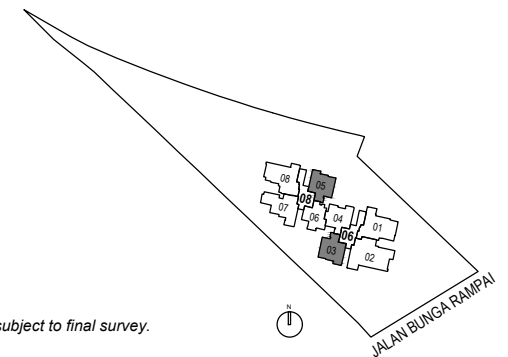


#### LEGEND

DB/ST	DISTRIBUTION BOARD/STORAGE
F	FRIDGE
HS	HOUSEHOLD SHELTER
W/D	WASHER CUM DRYER



Areas include AC ledge, balcony, PES and strata void where applicable. The plans are subjected to change as may be required by relevant authorities. All areas and measurements stated herein as approximate and subject to final survey.



## TYPE 2c

Area: 68 sq m / 732 sq ft

Unit(s): #03-04 to 15-04

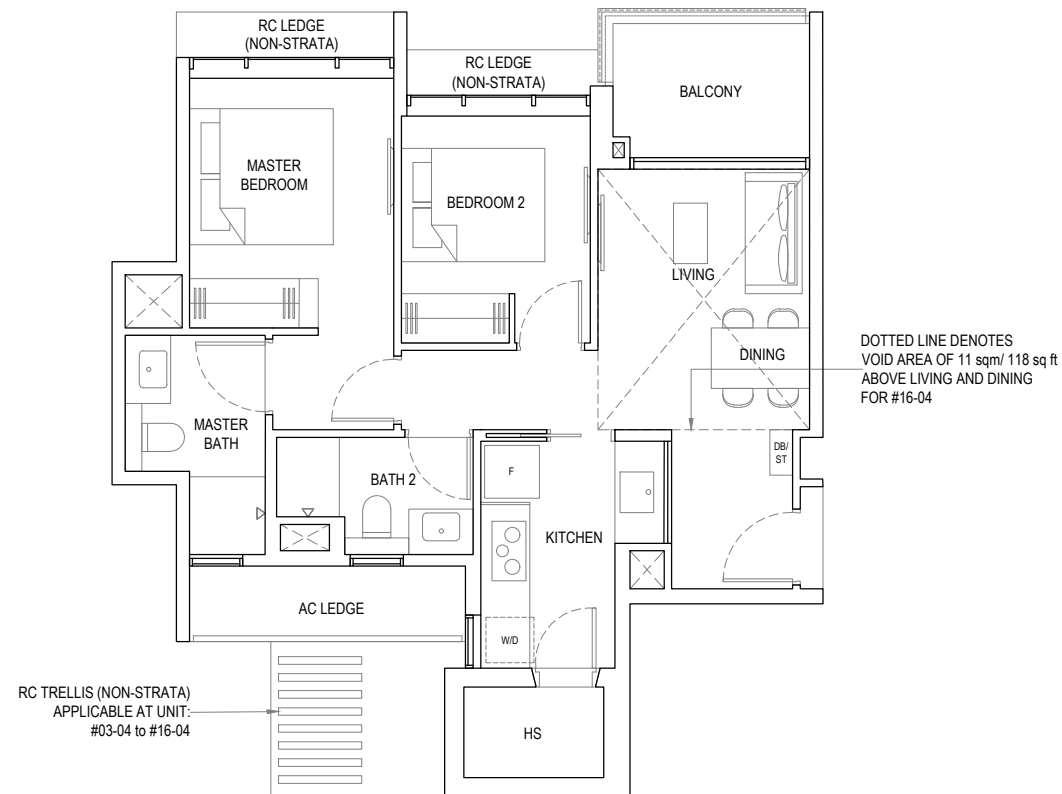
## TYPE 2c-P

Area: 79 sq m / 850 sq ft

Including strata void area of  
11 sq m / 118 sq ft  
above living and dining

Unit(s): #16-04

## 2 Bedroom Premium 2

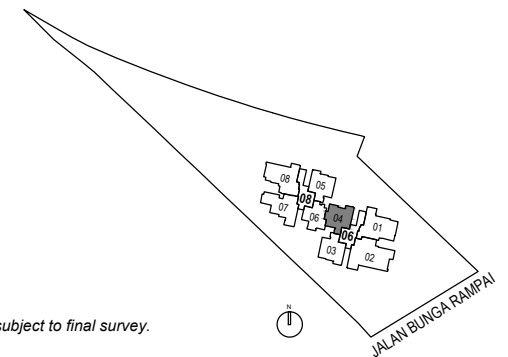


### LEGEND

DB/ST	DISTRIBUTION BOARD/STORAGE
F	FRIDGE
HS	HOUSEHOLD SHELTER
W/D	WASHER CUM DRYER



Areas include AC ledge, balcony, PES and strata void where applicable. The plans are subjected to change as may be required by relevant authorities. All areas and measurements stated herein as approximate and subject to final survey.



## 3 Bedroom

### TYPE 3a

Area: 88 sq m / 947 sq ft

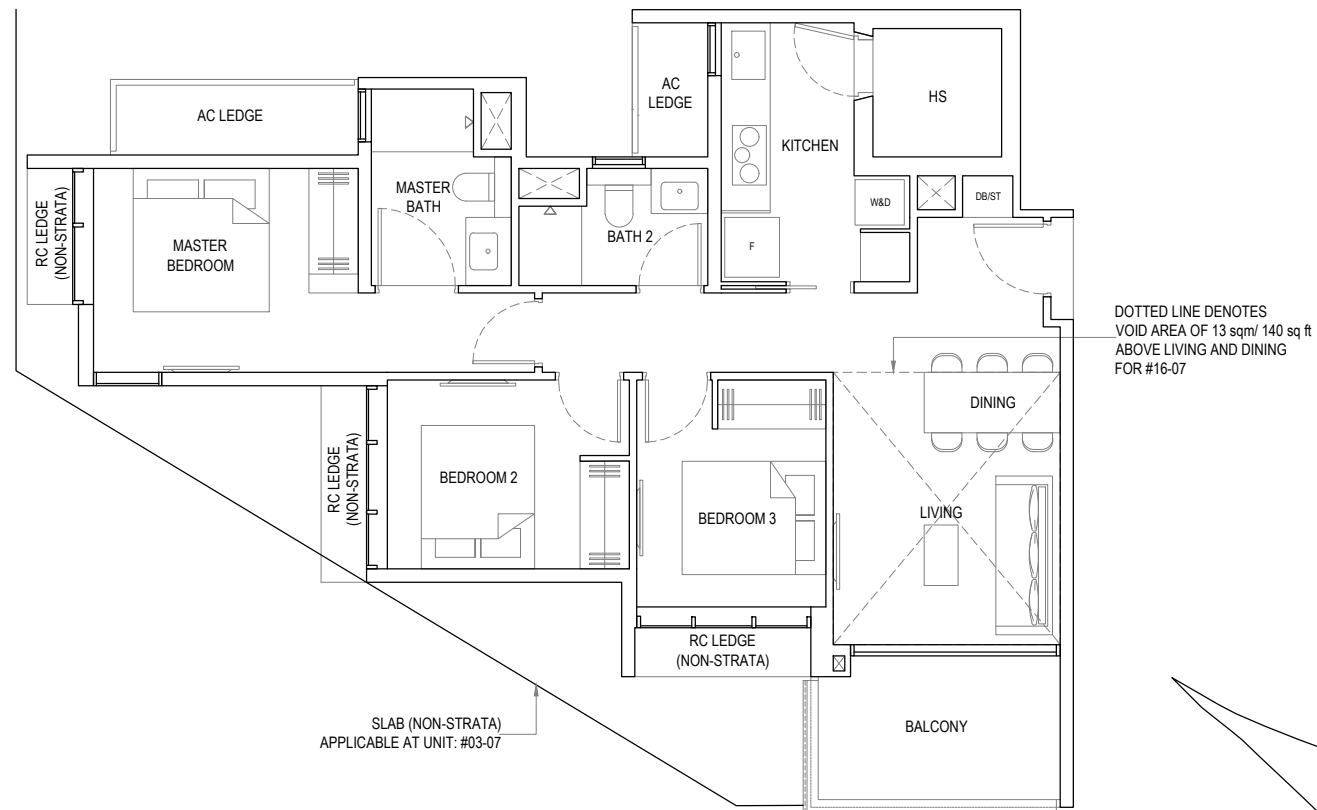
Unit(s): #03-07 to #15-07

### TYPE 3a-P

Area: 101 sq m / 1087 sq ft

Including strata void area of  
13 sq m / 140 sq ft  
above living and dining

Unit(s): #16-07

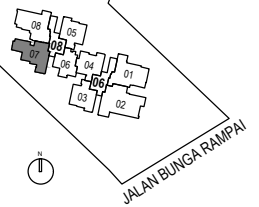


#### LEGEND

DB/ST	DISTRIBUTION BOARD/STORAGE
F	FRIDGE
HS	HOUSEHOLD SHELTER
W&D	WASHER & DRYER



Areas include AC ledge, balcony, PES and strata void where applicable. The plans are subjected to change as may be required by relevant authorities. All areas and measurements stated herein as approximate and subject to final survey.



## TYPE 3b

Area: 97 sq m / 1055 sq ft

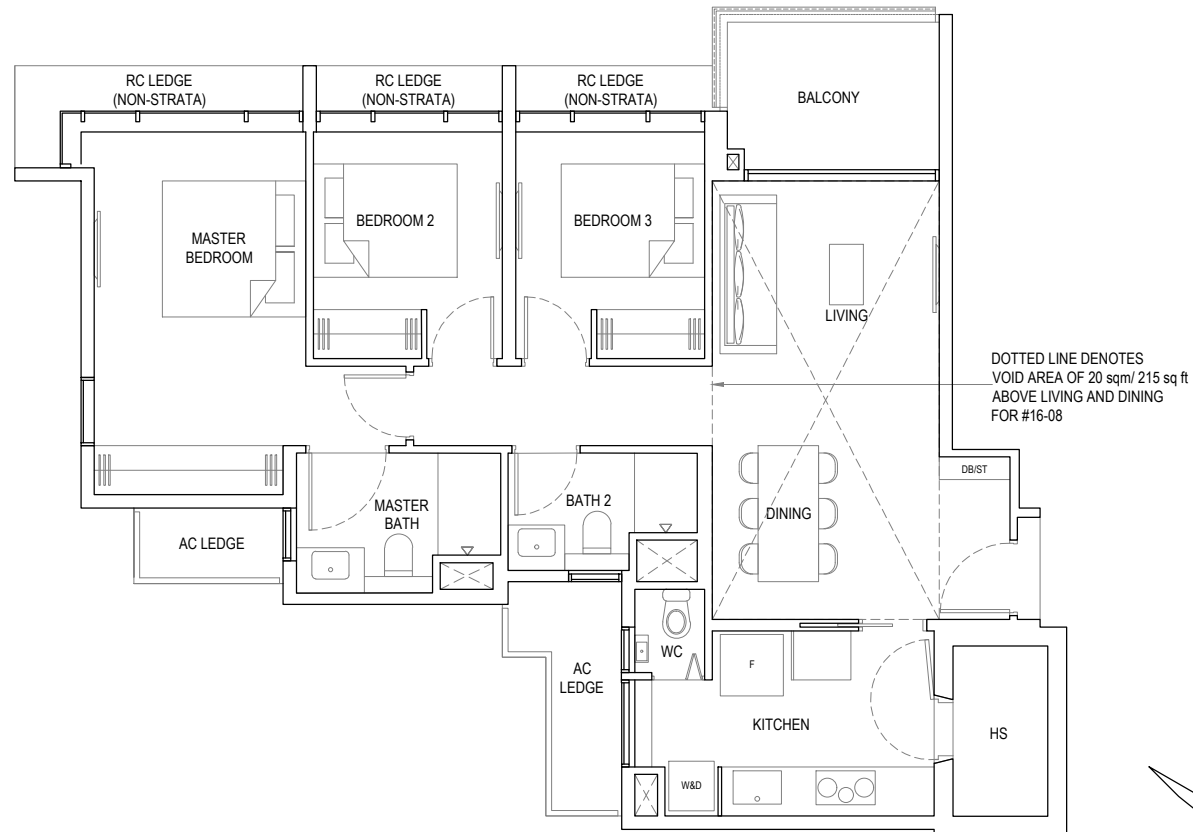
Unit(s): #03-08 to #15-08

## TYPE 3b-P

Area: 117 sq m / 1259 sq ft

Including strata void area of  
20 sq m / 215 sq ft  
above living and dining

Unit(s): #16-08



### LEGEND

DB/ST	DISTRIBUTION BOARD/STORAGE
F	FRIDGE
HS	HOUSEHOLD SHELTER
W&D	WASHER & DRYER



Areas include AC ledge, balcony, PES and strata void where applicable. The plans are subjected to change as may be required by relevant authorities. All areas and measurements stated herein as approximate and subject to final survey.

## 3 Bedroom Premium 1



## TYPE 3c

Area: 99 sq m / 1066 sq ft

Unit(s): #02-01 to #15-01

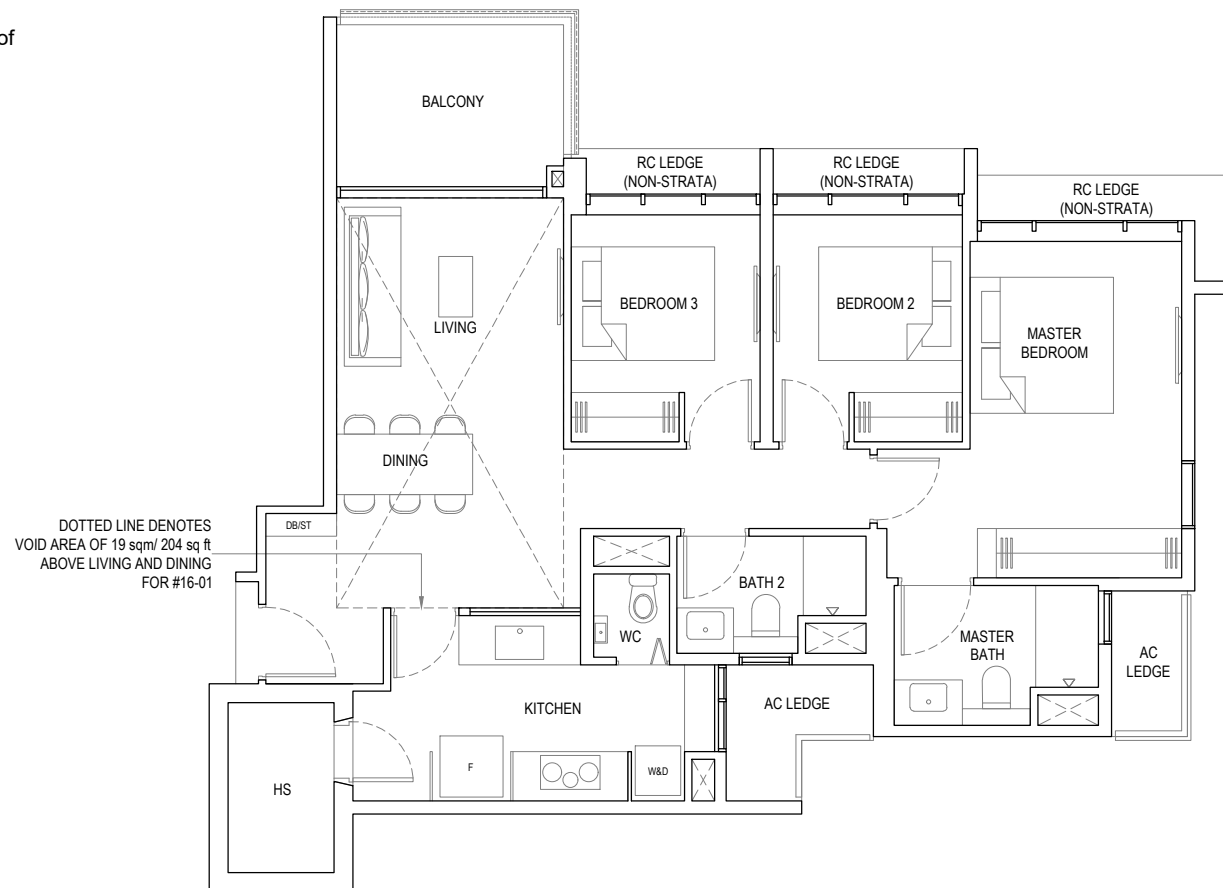
## TYPE 3c-P

Area: 118 sq m / 1270 sq ft

Including strata void area of  
19 sq m / 204 sq ft  
above living and dining

Unit(s): #16-01

## 3 Bedroom Premium 2



### LEGEND

DB/ST	DISTRIBUTION BOARD/STORAGE
F	FRIDGE
HS	HOUSEHOLD SHELTER
W&D	WASHER & DRYER



Areas include AC ledge, balcony, PES and strata void where applicable. The plans are subjected to change as may be required by relevant authorities. All areas and measurements stated herein as approximate and subject to final survey.



## 4 Bedroom + Study

### TYPE 4a

Area: 126 sq m / 1356 sq ft

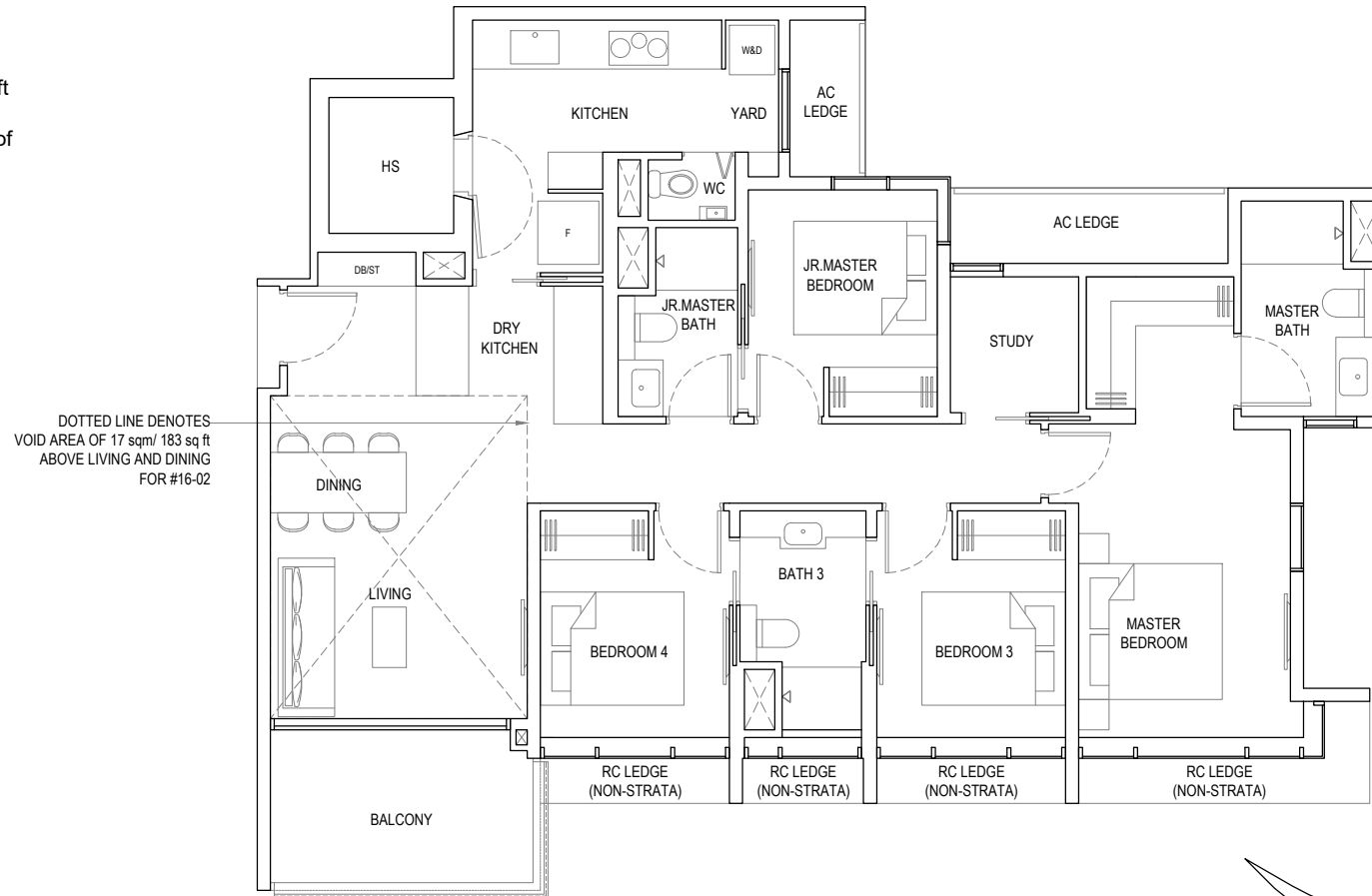
Unit(s): #02-02 to #15-02

### TYPE 4a-P

Area: 143 sq m / 1539 sq ft

Including strata void area of  
17 sq m / 183 sq ft  
above living and dining

Unit(s): #16-02



#### LEGEND

DB/ST	DISTRIBUTION BOARD/STORAGE
F	FRIDGE
HS	HOUSEHOLD SHELTER
W&D	WASHER & DRYER



Areas include AC ledge, balcony, PES and strata void where applicable. The plans are subjected to change as may be required by relevant authorities. All areas and measurements stated herein as approximate and subject to final survey.

